



STEP 98 Preload™

– Fire resistant electric strike with fixed cut-out for mechanical deadbolt

STEP 98 Preload has a fixed cut-out that can operate in conjunction with a lock case's hook bolt or deadbolt, to block the door's access control system/reader or door automation. Fire resistance class E/EI 120.



STEP 98 Preload has the option of letting the door lock's hook bolt or deadbolt go through the faceplate into the electric strike's fixed cut-out. This is desirable in door environments where you want to be able to block the door's access control system/reader or door automation with, for example, a thumbturn or key.

Reliability and easy installation with minimal dimensions

STEP's unique Preload technology and small dimensions provides a lock with high operational reliability and easy installation in almost all door environments.

Optional accessory: a dead bolt indication

To STEP 98 Preload, it is possible to install a dead bolt indication to the electric strike. This indication can be used to automatically block the door's access control system/reader or door automation when the hook bolt/deadbolt is mechanically locked. The dimensions is 59x35x24 mm.

Wide range of faceplates

STEP 98 Preload has the same faceplate assortment as STEP 40, 90, 48 Preload and STEP 90 Release.

Suitable lock cases for the Scandinavian market

- Sash locks, single and double latch locks in the Kaba 1400 series
- Sash locks, single and double latch locks in the Connect series
- Sash locks, single and double latch locks in the Modular series
- Single and double latch locks in the Narrow profile series

When it has to work.

STEP
98
PRELOAD

Technical data



Fire resistance class E/EI 120

Power consumption with fail secure and fail safe functions	
24 V DC +15 % - 10 %	12 V DC + 15 % - 10 %
110 mAh / max 300 mA	220 mAh / max 600 mA

Power consumption 0 mA for rotating cam at rest (fail secure = locked, fail safe = unlocked)

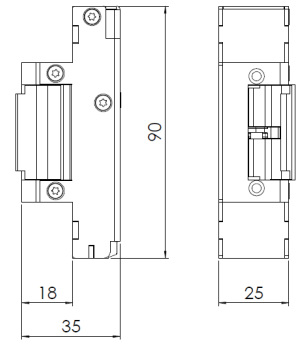
Article number for Scandinavian standards	Designation
ST980	Fail secure function 24 V DC.
ST980-12	Fail secure function 12 V DC.
ST9800	Fail secure function 24 V DC, including bolt contact.
ST9800-12	Fail secure function 12 V DC, including bolt contact.
ST9801	Fail safe function 24 V DC, including bolt contact.
ST9801-12	Fail safe function 12 V DC, including bolt contact.
ST9805	Adjustable function 24 V DC, including bolt contact.
ST9805-12	Adjustable function 12 V DC, including bolt contact.
ST981	Fail safe function 24 V DC.
ST981-12	Fail safe function 12 V DC.
ST985	Adjustable function 24 V DC.
ST985-12	Adjustable function 12 V DC.

- Durability: Grade X per EN 14846.
- Corrosion: Grade M per EN 14846.
- Security: Grade 3 per EN 14846.
- Security electrical manipulation: Grade 1 per EN 14846.
- Approved fire resistance class E/EI 120.
- Microswitch unipolar changeover, max. 30 V DC, 1A.
- Built-in protective diode.
- Detection indication that the door is closed/open (valid for products with bolt contact).
- Break resistance 9 kN (≈ 900 kg).
- Opens despite preload up to 0,4 kN (≈ 40 kg) in fail secure and fail safe function.
- Anti-hammer secured.
- Reversible to fit right- and left hung doors.
- Fixed cut-out for mechanical deadbolt or hook bolt.

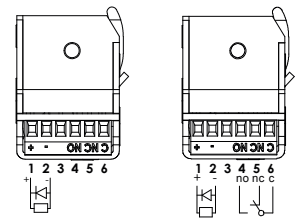
STEP's unique Preload technology

A common problem is that a door is subjected to pressure, for example, because the door is a little skew or that gravel or snow has gathered at the doorstep. STEP 98 Preload is equipped with STEP's unique Preload technology that allows the door to unlock, even if subjected to pressures of up to 40 kg.

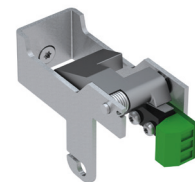
- **Seals and pressure differences** – The Preload function enables the door to always be unlocked even when the door lock is tensioned against the electric strike.
- **Door automation** – The Preload function combined with rapid unlocking means that the door opens quickly and without risk of becoming stuck.
- **Evacuation door** – The Preload function ensures that a fire alarm can release the lock, despite pressure against the door by crowds, seals, pressure differences or warped doors.



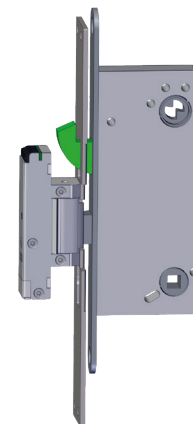
Dimensional drawing STEP 98 Preload.



Wiring diagram without and with bolt contact.



Optional accessory: a dead bolt indication.



Here, a hook bolt is thrown through the faceplate into the electric strike's fixed cut-out and thus blocked the door's access control system/reader or door automation.