



STEP Break protection

– Break protection for Scandinavian standards

STEP break protection increases security in the door environment by making it difficult for thieves to break in between the door and the frame. Break protection is made of stainless steel.

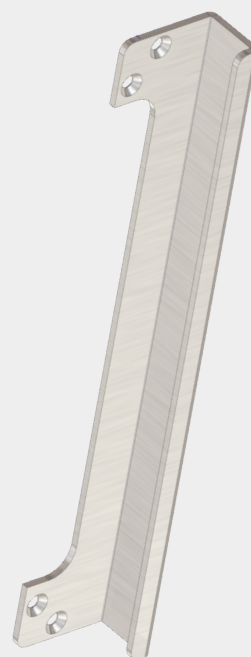
Surface or recessed mounting

- Break protection 285 mm. Break protection covers the lock case and is mounted recessed into the door leaf.
- Break protection 2300 mm is available in two variants, one for recessed mounting in the door leaf, and one for surface mounting. Break protection can be trimmed if necessary.

A connecting break protection faceplate is sold separately.

Break protection faceplates

Break protection can be mounted together with faceplates for STEP 40/90 Preload, STEP 90 Release and STEP 60 Silent.

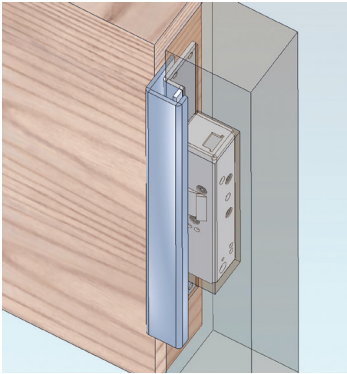
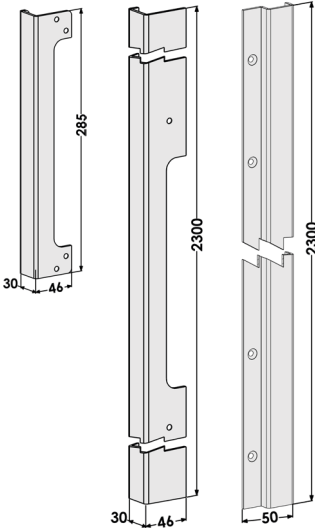


When it has to work.

Technical data

| Art.no | Designation |
|--------|---|
| ST6059 | Break protection 258 mm, insert door chink (covers lock case). |
| ST6090 | Break protection 2300 mm, insert outside door leaf (adapted to door length). |
| ST6095 | Break protection 2300 mm, insert outside door chink (adapted to door length). |

| | | |
|--------|--------|--------|
| ST6059 | ST6090 | ST6095 |
|--------|--------|--------|



Recessed break protection mounted with electric strike and break protection faceplate.

| Art.no | Designation |
|---------|--|
| ST4065H | Break protection faceplate right for Modular/Narrow, for use with STEP 40/90 Preload or STEP 90 Release. |
| ST4065V | Break protection faceplate left for Modular/Narrow, for use with STEP 40/90 Preload or STEP 90 Release. |
| ST6549 | Break protection faceplate right for Modular/Narrow, for use with STEP 60 Silent. |
| ST6550 | Break protection faceplate left for Modular/Narrow, for use with STEP 60 Silent. |
| ST6563 | Break protection faceplate left/right for Connect single latch, for use with STEP 60 Silent. |
| ST6564 | Break protection faceplate left/right for Connect double latch, for use with STEP 60 Silent. |

| | | | | | |
|---------|---------|--------|--------|--------|--------|
| ST4065H | ST4065V | ST6549 | ST6550 | ST6563 | ST6564 |
|---------|---------|--------|--------|--------|--------|

