



STEP 350™

– increases intrusion security around the lock, in high-frequency doors

STEP 350 is developed with world-leading technology. It increases the intrusion security in perimeter locking and creates a secure locking around the lock, without you having to compromise with other requirements. The lock is adapted for high-frequency door environments and can handle several million openings!

The lock can combine requirements for evacuation, re-entry and fire resistance, while at the same time giving the door environment a significantly higher intrusion security. STEP 350 is equipped with a strong hook bolt that really ensures that the door is locked.

- Certified for intrusion protection in class 2A, 2B and 3 acc. to SSF 3522.
- Certified for evacuation acc. to EN 179:2008.
- Certified in fire technical class E/EI120 acc. to EN 14846:2008.

Opened via the cylinder follower

STEP 350 is opened via the cylinder follower, meaning you can unlock both the hook bolt and the latch bolt with a key from the exterior side or via thumb turn/emergency exit device on the interior side. This motor lock can therefore with advantage be placed in an alarmed evacuation door.

FreeDrive® and manipulation protected block function

STEP 350 is equipped with FreeDrive®, a unique technology that enables the locks motor and gearbox to disengage every time the door unlocks mechanically. The lock has a double blocking, where the blocking of the hook bolt also is blocked by a latch.

Control units with smart features

Choose from two different control units: ST300C and ST500C. They use encrypted communication OSDP AES-128 for locking, unlocking and status indications.

When it has to work.



STEP 350

Technical data

Functional description

- The hook bolt locks/unlocks electrically via opening signal from access control system, code lock, push button or similar.
- The hook bolt and latch bolt retracts mechanically via the cylinder follower from the interior and exterior side.
- The latch bolt retracts mechanically via the lever handle from the interior and exterior side.
- Normal passage occurs via opening signal from access control system, code lock, push button or similar from the interior and exterior side.
- The latch bolt is reversible to fit both right and left hung doors.

Certificates

- Certified in Class 2A, 2B and 3 according to SSF 3522.
- Certified for evacuation according to EN 179:2008.
- Certified in fire technical class E/EI120 according EN 14846:2008.
- Certified in Grade L for corrosion, temperatures and humidity, which corresponds to high requirements according to EN 14846.

Product characteristics

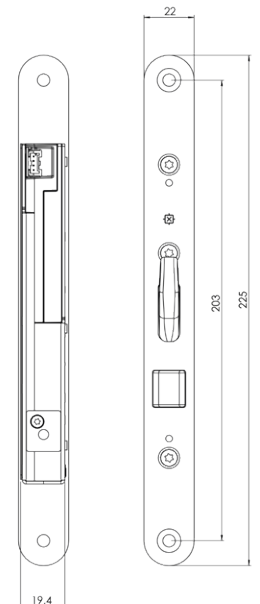
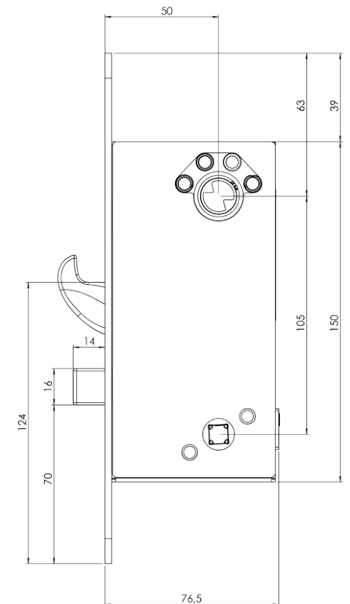
- Unlocks in less than 0.1 second.
- Modern bolt placement.
- FreeDrive® technology.
- Manipulation-protected block function.
- Back set 50 mm.
- Encrypted communication OSDP AES-128.
- Both control units can handle re-entry.
- Evacuation and re-entry are ensured with STEP Exit emergency exit devices.
- Designed to be used in high frequency doors.

Environment

- The control unit can handle temperatures from -5 to +70 degrees.
- The lock can withstand temperatures from -20 to +70 degrees.

Art.nr	Description
ST350	STEP 350 Motor lock. Incl. ST350, 10 m connection cable ST0916H, drill protection ST1199, magnetic contact ST0910, screw and connector set ST1192.

		
Fire approved: E/EI 120	Certified acc.to. EN 179:2008	Security: Class 2A, 2B, 3 acc. to SSF 3522



Dimensional drawing for STEP 350.

Combine with STEP Exit to maximize the benefits of FreeDrive®

Combine STEP 350 with STEP Exit emergency exit devices to create a secure evacuation route. Certified according to EN 179:2008.

Combine with STEP Exit to maximize the benefits of the FreeDrive®

The FreeDrive® technology disconnects the motor and gearbox, meaning that they are never affected when the exit device's lever is used. As a result, the impact on the motor and gearbox is minimized, even if the exit device is used thousands of times each day.